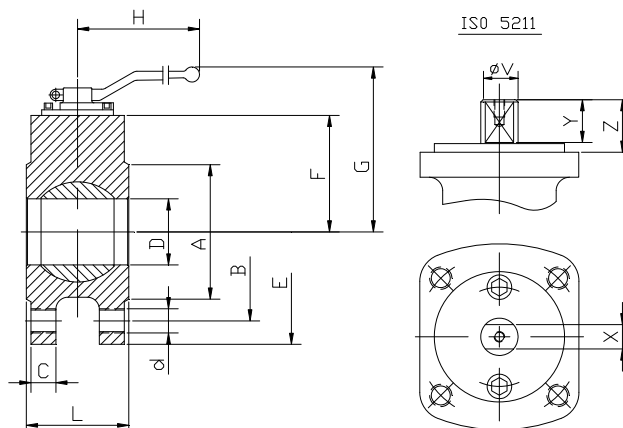
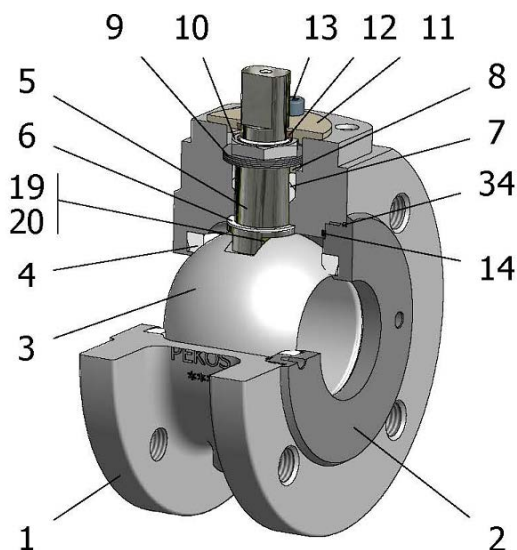


FIG. 94 TTTV PN16 DN15/100



Position	Description	Material
01	Body 1	C.S. 1.0619
02	Body 2	C.S. A-105
03	Ball	S.S. 1.4408
04	Seat	PTFE
05	Stem	S.S. 1.4401
06	Stem seal	PTFE+FG
07	Stem packing 1	PTFE
08	Gland packing	S.S. 1.4401
09	Spring washer	S.S. 1.4310
10	Stem nut	S.S. 1.4305
11	Cover	S.S. 1.4408
12	Cover ring	PTFE
13	Cover bolt	A4-70
14	Body seal 1	PTFE
16	Handle	WCB
17	Handle bolt	1.045(8.8)
19	Spring	S.S. 1.4401
20	Antistatic ball	S.S. 1.4401
34	Body seal 2	Viton

**General features**

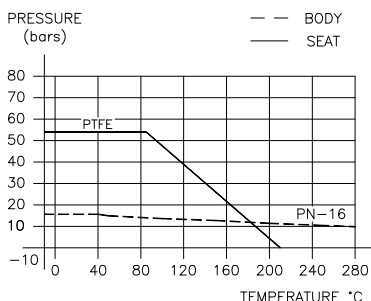
- Floating ball.
- End entry.
- Full bore.
- Soft seat.
- Bidirectional.
- TA-LUFT.
- Anti Blow out proof stem.
- Autoadjustable packing.
- Anti static device.
- Self-cavity pressure relief.

**Standards**

- Top flange ISO 5211
- Flanges EN 1092-01
- Testing EN-12266, ISO 5208
- Design EN-12516, ISO 17292

**Official approvals**

- TÜV.AD-MERKBLATT WO
- TA-LUFT
- ATEX 94-9EC
- PED 97/23/CE.
- SIL 3 CAPABLE



**PEKOS GROUP CERTIFICATES:**  
ISO 9001-2008 / 97-23-CE / API-6D



**DIMENSIONS & Technical information**

DN	PN	D	L	E	A	B	C	F	H	G	V	X	Y	Z	n x d	ISO 5211	Torque	MAST	Weight
15	16	15	35	95	45	65	16	37	185	102	12	8	14	26	4 x M12	F03	8	36,6	1,6
20	16	20	35	105	58	75	18	37	185	102	12	8	14	26	4 x M12	F03	8	36,6	1,9
25	16	25	43	115	68	85	18	41	185	106	12	8	14	26	4 x M12	F03	14	36,6	2,7
32	16	30	51	140	78	100	18	63	185	117	16	10	19	22	4 x M16	F05	20	80,1	5,3
40	16	38	64	150	88	110	18	75	185	129	16	10	19	22	4 x M16	F05	31	80,1	5
50	16	50	85	165	102	125	20	83	293	137	20	14	22	25	4 x M16	F07	42	175,2	7,4
65	16	64	103	185	122	145	18	97	293	152	20	14	22	25	4 x M16	F07	55	175,2	10,3
80	16	75	120	200	138	160	20	110	350	185	25	19	24	27	8 x M16	F10	78	363,0	14,4
100	16	98	155	220	158	180	20	126	350	199	25	19	24	27	8 x M16	F10	105	363,0	21,8

\*\* Depending on service conditions. \* Dimensions are in mm. \* Torque & MAST are in Nm. \* Weight is in Kilogram  
\* Torque values have been measured ΔP at maximum rating at room temperature